

Shaft

Wall Thickness	0.203" (5.16 mm)
Round HSS Outside Diameter	2.875" (73.0 mm)
Available Standard Lengths	5'-3" (1.6 m) / 7'-0" (2.1 m) / 10'-6" (3.2 m)

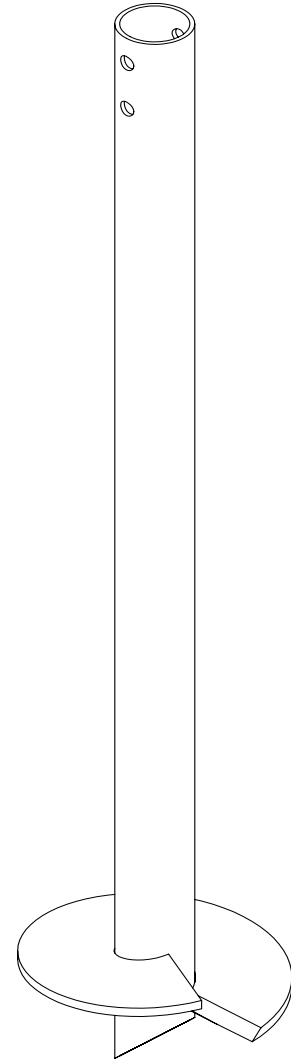
Load Specifications

Max. Installation Torque :	4444 ft-lb (5423.3 N-m)
Max. Allowable Capacity*	20 kips (kN)

* Higher load ratings could be considered with site-specific engineering.

Technical Specifications

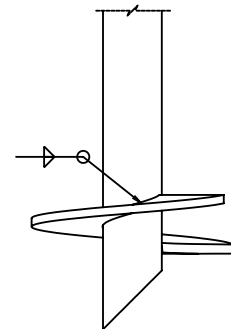
Commonly Used Structure	Medium Residential Light Commercial
Code Evaluation	IRC/IBC 2021
Standard Steel	ASTM A500 Grade C Fy=51 ksi min (350 MPa)
Black Steel Design Life	50 years per AC358
Coating	Galvanized or Black Steel
Galvanization Compliance	ASTM A123/A123M
Additional Corrosion Protection	Cathodic Protection System available



Helix

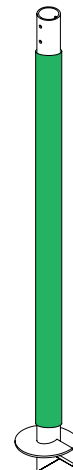
Pitch	3" (76.2 mm) / 5" (127 mm)
Thickness	0.375" (9.5 mm)
Standard Steel	CSA G40.21-44W Fy=44 ksi min (300 MPa)
Coating	Galvanized or Black Steel
Multiple Welded Helix	Available
Helix Size*	8" (203 mm) to 24" (610 mm)

* Other sizes available upon request.

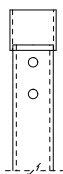


Sleeve (Available)

Function Utility	Protection against soil movements
Wall Thickness	1/16" (1.6 mm)
Outside Diameter	± 3.125" (± 79.4 mm)
Length	± 66" (± 1.67 m)
Weight	± 1.25 lb (± 0.57 kg)
Material	HDPE
Color	Green



Outside Couplings



Regular	
Assembly	Welded
Wall Thickness	0.216" (5.49 mm)
Round HSS Outside Diameter	3.5" (88.9 mm)
Standard Steel	ASTM A500 Grade C Fy=51 ksi min (350 MPa)
Length*	3.5" (88.9 mm)

* Factory welded outside coupling length or on site.

Pile Caps

Wood Structure Connectors	Pages 59-62, 64, 65
Steel Structure Connectors	Page 63
Concrete Construction Connectors	Pages 63, 70-72