

Shaft

Wall Thickness	0.145" (3.7 mm)
Round HSS Outside Diameter	1.9" (48.3 mm)
Available Standard Lengths	7'-0" (2.1 m) / 10'-6" (3.2 m)

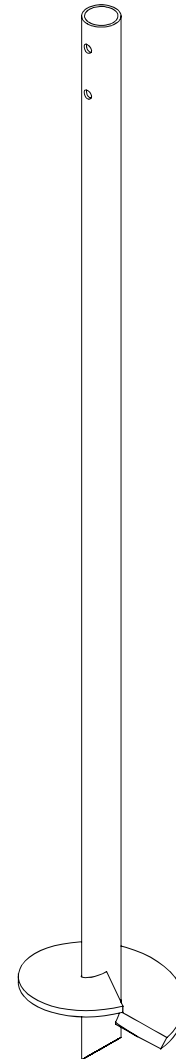
Load Specifications

Max. Installation Torque	1,336 ft-lb (1,810 N-m)
Max. Allowable Capacity*	7 kips (30 kN)

* Higher load ratings could be considered with site-specific engineering.

Technical Specifications

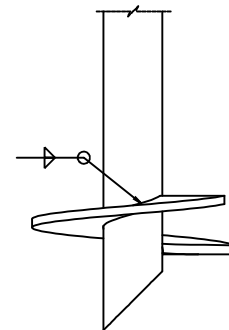
Commonly Used Structure	Light Residential
Code Evaluation	Listed per IAPMO-UES (ER-481)
Standard Steel	ASTM A500 Grade C Fy=51 ksi min (350 MPa)
Black Steel Design Life	50 years per AC308
Coating	Galvanized or Black Steel
Galvanization Compliance	ASTM A123/A123M
Additional Corrosion Protection	Cathodic Protection System available



Helix

Pitch	3" (76.2 mm)
Thickness	0.375" (9.5 mm)
Standard Steel	CSA G40.21-44W Fy=44 ksi min (300 MPa)
Coating	Galvanized or Black Steel
Multiple Welded Helix	Available
Helix Size*	6" (152 mm) to 12" (305 mm)

* Other sizes available upon request.

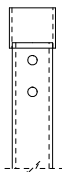


Sleeve (Available)

Function Utility	Protection against soil movements
Wall Thickness	1/16" (1.6 mm)
Round HSS Outside Diameter	± 2.125" (± 54.2 mm)
Length	± 66" (± 1.67 m)
Weight	± 0.9 lb (± 0.41 kg)
Material	HDPE
Color	Green



Outside Couplings



Regular

Assembly	Welded
Wall Thickness	0.154" (4 mm)
Round HSS Outside Diameter	2.375" (60.3 mm)
Standard Steel	ASTM A500 Grade C
	Fy=51 ksi min (350 MPa)
Length*	1.25" (31.8 mm)

* Length of outside coupling welded on-site.