

Shaft

Wall Thickness	0.300" (7.62 mm)
Round HSS Outside Diameter	3.5" (88.9 mm)
Available Standard Lengths	5'-3" (1.6 m)/ 7'-0" (2.1 m) / 10'-6" (3.2 m)

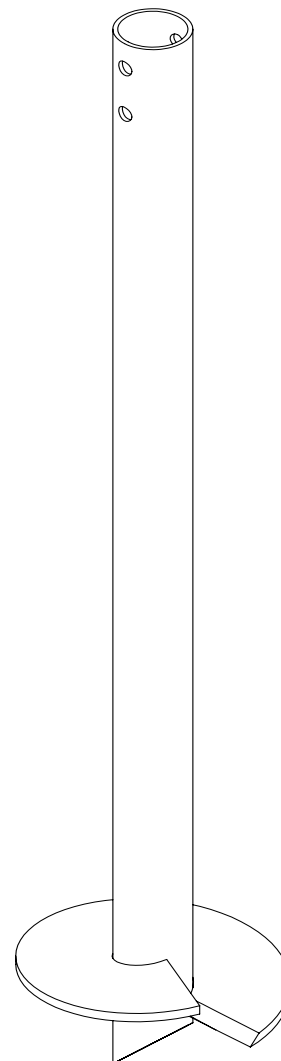
Load Specifications

Max. Installation Torque	11,000 ft-lb (14,902 N-m)
Max. Allowable Capacity*	38 kips (168.9 kN) to 45 kips (200 kN)

* Higher load ratings could be considered with site-specific engineering.

Technical Specifications

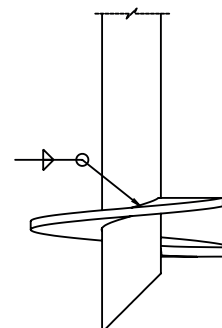
Commonly Used Structure	Heavy Residential
	Light to Heavy Commercial
	Industrial
Code Evaluation	Listed per ICC-ES (ESR-3418) / IAPMO-UES (ER-481)
	Standard Steel
Black Steel Design Life	50 years per AC358
Coating	Galvanized or Black Steel
Galvanization Compliance	ASTM A123/A123M
Additional Corrosion Protection	Cathodic Protection System available



Helix

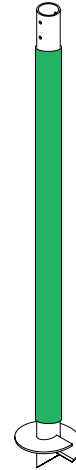
Pitch	3" (76.2 mm) / 5" (127 mm)
Thickness	0.5" (12.7 mm)
Standard Steel	CSA G40.21-44W Fy=44 ksi min (300 MPa)
	Coating
Multiple Welded Helix	Available
Helix Size*	8" (203 mm) to 24" (610 mm)

* Other sizes available upon request.

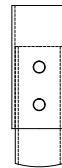
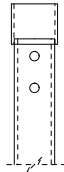


Sleeve (Available)

Function Utility	Protection against soil movements
Wall Thickness	1/16" (1.6 mm)
Outside Diameter	± 3.75" (± 95.2 mm)
Length	± 66" (± 1.67 m)
Weight	± 1.52 lb (± 0.69 kg)
Material	HDPE
Color	Green



Outside Couplings



	Regular	Reinforced
Assembly	Welded	Welded
Wall Thickness	0.226" (5.74 mm)	0.226" (5.74 mm)
Round HSS Outside Diameter	4" (101.6 mm)	4" (101.6 mm)
Standard Steel	ASTM A500 Grade C Fy=51 ksi min (350 MPa)	ASTM A500 Grade C Fy=51 ksi min (350 MPa)
Length*	3.5" (88.9 mm)	8.75" (222.3 mm)

* Factory welded outside coupling length or on site.

Pile Caps

Wood Structure Connectors	Pages 64-66
Steel Structure Connectors	Pages 63, 67, 68
Concrete Construction Connectors	Pages 63, 69-72

Foundation Repair Brackets

Concrete Wall	Page 74
Concrete Masonry Unit (CMU) Wall	Pages 75-77
Interior Concrete Wall	Page 78