

## Shaft

Wall Thickness	0.154" (3.91 mm)
Round HSS Outside Diameter	2.375" (60.3 mm)
Available Standard Lengths	5'-3" (1.6 m) / 7'-0" (2.1 m) / 10'-6" (3.2 m)

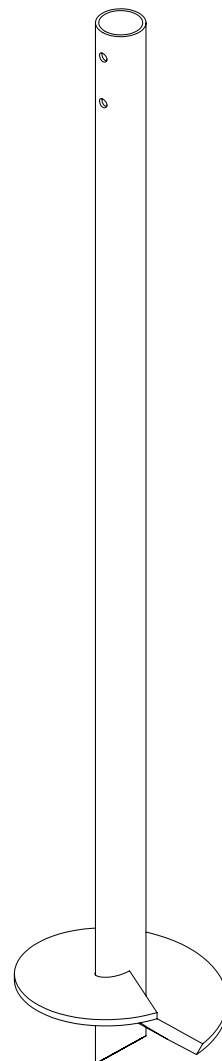
## Load Specifications

Max. Installation Torque	2,242 ft-lb (3,037 N-m)
Max. Allowable Capacity*	11 kips (49 kN)

\* Higher load ratings could be considered with site-specific engineering.

## Technical Specifications

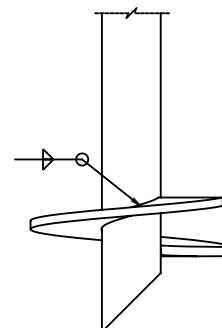
Commonly Used Structure	Medium Residential Light Commercial
Code Evaluation	Listed per IAPMO-UES (ER-481)
Standard Steel	ASTM A500 Grade C Fy=51 ksi min (350 MPa)
Black Steel Design Life	50 years per AC358
Coating	Galvanized or Black Steel
Galvanization Compliance	ASTM A123/A123M
Additional Corrosion Protection	Cathodic Protection System available



## Helix

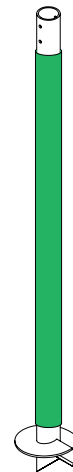
Pitch	3" (76.2 mm) / 5" (127 mm)
Thickness	0.375" (9.5 mm)
Standard Steel	CSA G40.21-44W Fy=44 ksi min (300 MPa)
Coating	Galvanized or Black Steel
Multiple Welded Helix	Available
Helix Size*	6" (152 mm) to 16" (406 mm)

\* Other sizes available upon request.

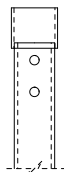


## Sleeve (Available)

Function Utility	Protection against soil movements
Wall Thickness	1/16" (1.6 mm)
Round HSS Outside Diameter	± 2.625" (± 66.7 mm)
Length	± 66" (± 1.67 m)
Weight	± 0.95 lb (± 0.43 kg)
Material	HDPE
Color	Green



## Outside Couplings



### Regular

Assembly	Welded
Wall Thickness	0.203" (5 mm)
Round HSS Outside Diameter	2.875" (73 mm)
Standard Steel	ASTM A500 Grade C Fy=51 ksi min (350 MPa)
Length*	1.25" (31.8 mm)

\* Factory welded outside coupling length or on site.

## Pile Caps

Wood Structure Connectors	Pages 35, 36, 39, 40, 43, 44, 47-50, 53, 54, 57, 58, 64, 65
Steel Structure Connectors	Page 63
Concrete Construction Connectors	Pages 63, 70-72